

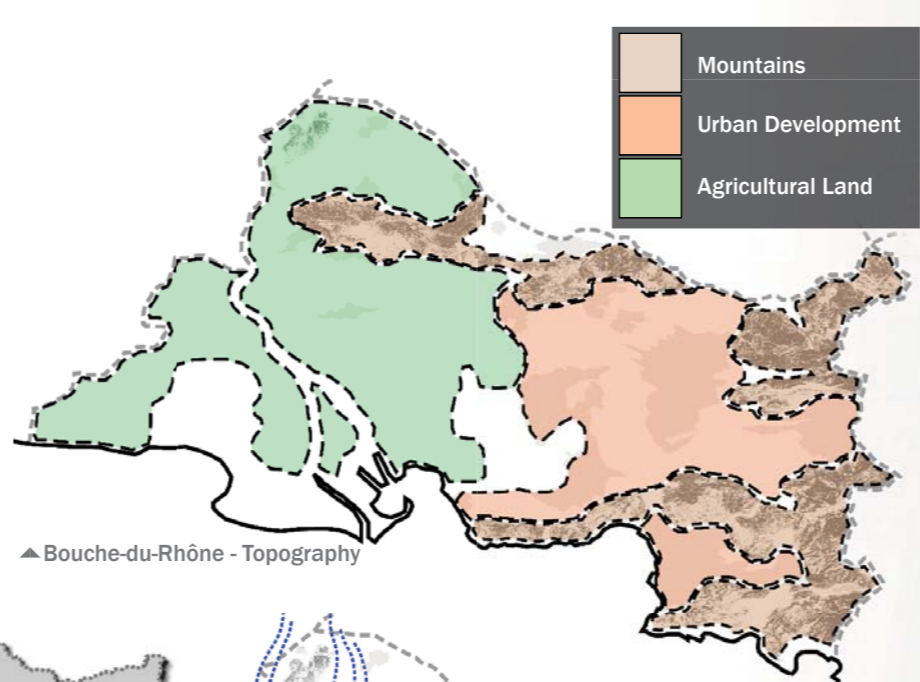
**Provence** is one of twenty two regions and is located in the South-East of France bordering Italy. In the diagram above the grey shading represents the Mountainous terrain of the Alps. A large amount of the development is located in the West and the South of Provence including the port of Marseille and the town of Avignon. In recent years with the aid of the TGV train this area of France has become more accessible to tourist and populace migration. The economy of Provence always relied on it's agriculture but in the last 30 years tourism has grown as a source of economy, with this there are many distinct problems occurring, agricultural land is being consumed by holiday villas and second homes and this in turn is increasing the cost of living which makes it harder for the agricultural farmers to support themselves and the agricultural economy is struggling.

**Bouches-du-Rhône** is one of the six departments that make up Provence. Marseille is the largest city in the department and is the largest port in the country. The department is bordered to the North and East by mountains which help shelter it from the strong katabatic wind called La Mistral. The uppermost diagram shows the path of La Mistral as it passes through the department. The diagram below this shows the land use in Bouche-du-Rhône. To the West is largely agricultural flat land and in the shelter of the mountains is where a large amount of the development has spread. Due to tourism a large number of the towns and villages in the area are expanding sporadically and some of the older towns are becoming segregated and dispersed in an expanse of holiday villas and second homes. This is suffocating the traditional way of life in the area and constricting the agricultural community.

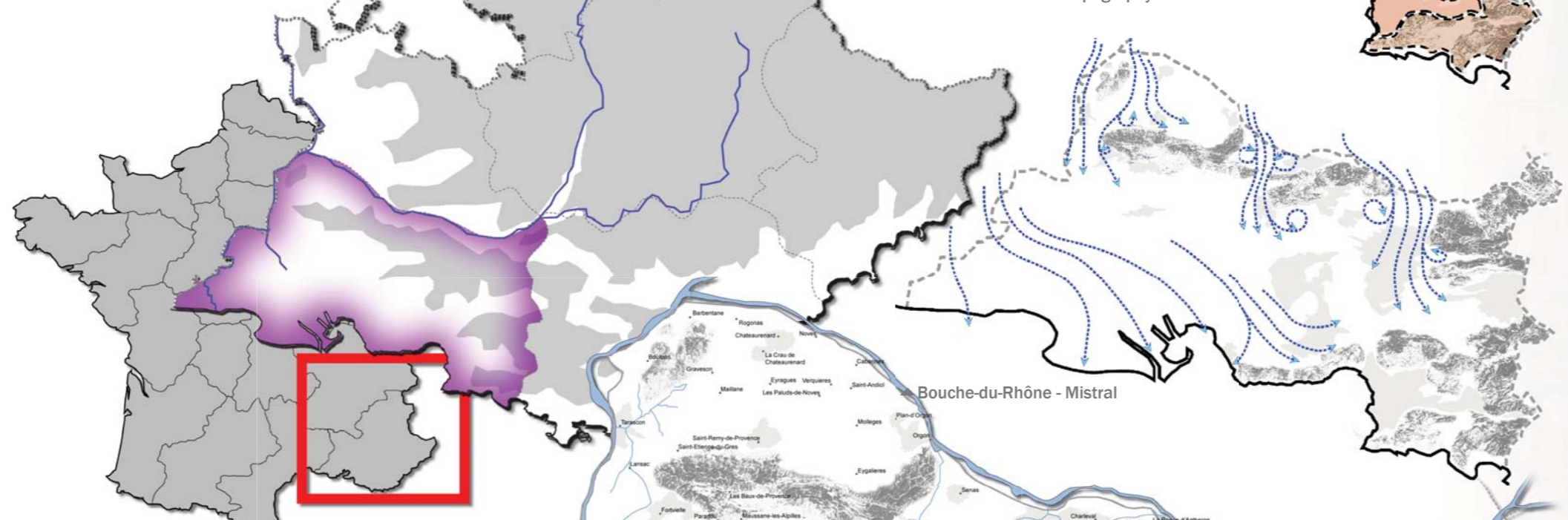
**Boulbon** commune is located in the North-West area of the Bouche-du-Rhône. The commune is approximately 19km<sup>2</sup> and has a current population of approximately 1,500 inhabitants. The settlement is built into a recess of La Montagnette, protecting it from La Mistral which travels down the Rhône valley that is situated directly to the North. The original settlement is mediaeval however developments to the South of the settlement were built towards the end of the 20th century. These developments largely consist of holiday villas and second homes. With the decline of the agricultural economy a large number of the inhabitants now commute to large towns and cities nearby and a large percentage of the fields surrounding Boulbon are disused and in need of cultivation. The younger generation of people in Boulbon cannot afford to stay and so there is a tendency to move to other less expensive locations. This is one of the scenarios that is causing segregation in the community and decaying the aesthetics of a typical agricultural rural village that you expect to find in the South of France.



▲ World Map



▲ Bouche-du-Rhône - Topography



Bouche-du-Rhône - Mistral

▲ Location of Provence



▲ Bouche-du-Rhône

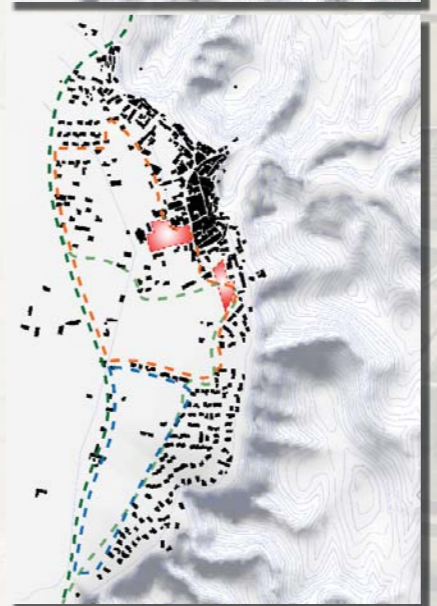
▲ Boulbon Commune



▲ Boulbon West - East Typical Section 1:1500

- Mountains
- Urban Development
- Agricultural Land

- Urban HUB Sites
- Maintained Open Space
- Agricultural Boundary
- High Density Zone
- Low Density Zone



- ▲ Urban Sprawl - 2060
- ▲ Development Control - 2009
- ▲ Development Prediction - 2060

▲ Boulbon Figure Ground - 2009

